

EXERCISE ONLY: FOR TRAINING PURPOSES

Name of Exercise	IED-TM Exercise 1 – Threat Assessment Part 1, Enemy Intent
Objective of Exercise	To encourage the participants to understand how an IED aggressors' intentions determines their method of IED attack. This will enable the participants to subsequently develop and interpret threat assessments.
Aim	The aim is to highlight the importance of understanding the aggressor's intent in order to develop your ability to conduct an accurate Threat Assessment.
Situation	<p>Situation.</p> <p>You are a member of the Combattants Indépendants du Sud Carana (CISC) a separatist group who opposes the current government and the UN Peacekeeping Force in CARANA. See CARANA Country Profile for details on this group. You are part of a small terrorist cell within the CISC trying to demonstrate that you are a professional IED cell capable of conducting deadly attacks.</p> <p>In response to recent news that the UN will commit peace enforcement troops to Operations in support of the stabilisation of CARANA. Due to the worsening security situation, a number of non-essential UN civilian staff are being evacuated from the country via the sea port at TOLE. You have been ordered to plan and execute an attack on UN workers within the attached area. Your intelligence has reported that an UN troop carrier ship will be arriving in TOLE to evacuate the UN staff from CARANA within the next 48–72 hours. We have discovered that this ship will berth somewhere within the area shown.</p> <p>It is believed that the UN staff will be arriving in small groups (10-15) in civilian vehicles with Carana National Police (CNP) escorts. They are 3 known entry points to the port (as shown on the map). UN staff are currently housed both West and East of the city but their routes to the port are not known.</p> <p>CISC have a sympathetic security guard who works at the port – some degree of access without being searched may be possible. The security guard will not take part in any attack and will have to be briefed on any action you require.</p> <p>Capability.</p> <ul style="list-style-type: none">• Shoot - Small arms only (no heavy weapons), No RPGs.• IED Capability: – Explosives - Large quantities (up to 500Kg) HME. – Small quantities 4-5 Kg C4. – Detonators. – Initiation switches• Command Wire, Radio Command.• Time Delay.

EXERCISE ONLY: FOR TRAINING PURPOSES

	<ul style="list-style-type: none">• Basic Victim Operated (pressure plates, tripwires, anti-lift) switches. <p><u>Your Mission:</u></p> <p>You and your team are to carry out an attack to kill and injure as many UN staff as possible in order to deter the UN from becoming involved and to demonstrate that CISC are a credible force.</p> <p><u>Limitations</u></p> <ul style="list-style-type: none">• You have little public support in most of the operating area so the public will not overtly support you and all resources must be brought into the area prior to the attack.• After the attack, your safe haven is 35km to the North-West over the border in SUMORA. <p>The leadership of the CISC has invoked the following restrictions on you:</p> <ul style="list-style-type: none">• The attack must be filmed.• The attack must take place either in or close to the port area to prove to the world that the UN military machine cannot even protect its own people against the CISC.• We do not wish for any of the cell to martyr themselves during this operation so you must consider and extraction plan.• Your team consists of 5 members.
Exercise Requirements	<p>The CISC Cell Commander will be here shortly. You have 45 min to plan. He will expect a 10 min brief from you. You are to:</p> <ol style="list-style-type: none">1. Produce a trace/overlay/sketch of the attack identifying all Contact Points (intended explosion site), Firing Points (triggerman location), escape routes, and relevant locations.2. Then brief your plan in detail. <ul style="list-style-type: none">• Any assumptions should be cleared with the instructor before detailed planning. – If you have any further questions or require information then ask the instructor.• Any information that you would seek to gain on reconnaissance will be available from the instructors. <p>Your plan must include:</p> <ol style="list-style-type: none">a) A brief scheme of manoeuvre (the outline of the plan with key timings)b) Your intent – who are you specifically targeting and why? Who do you not want to harm and why?c) Capability – what specific type of attack/IED are you going to use?

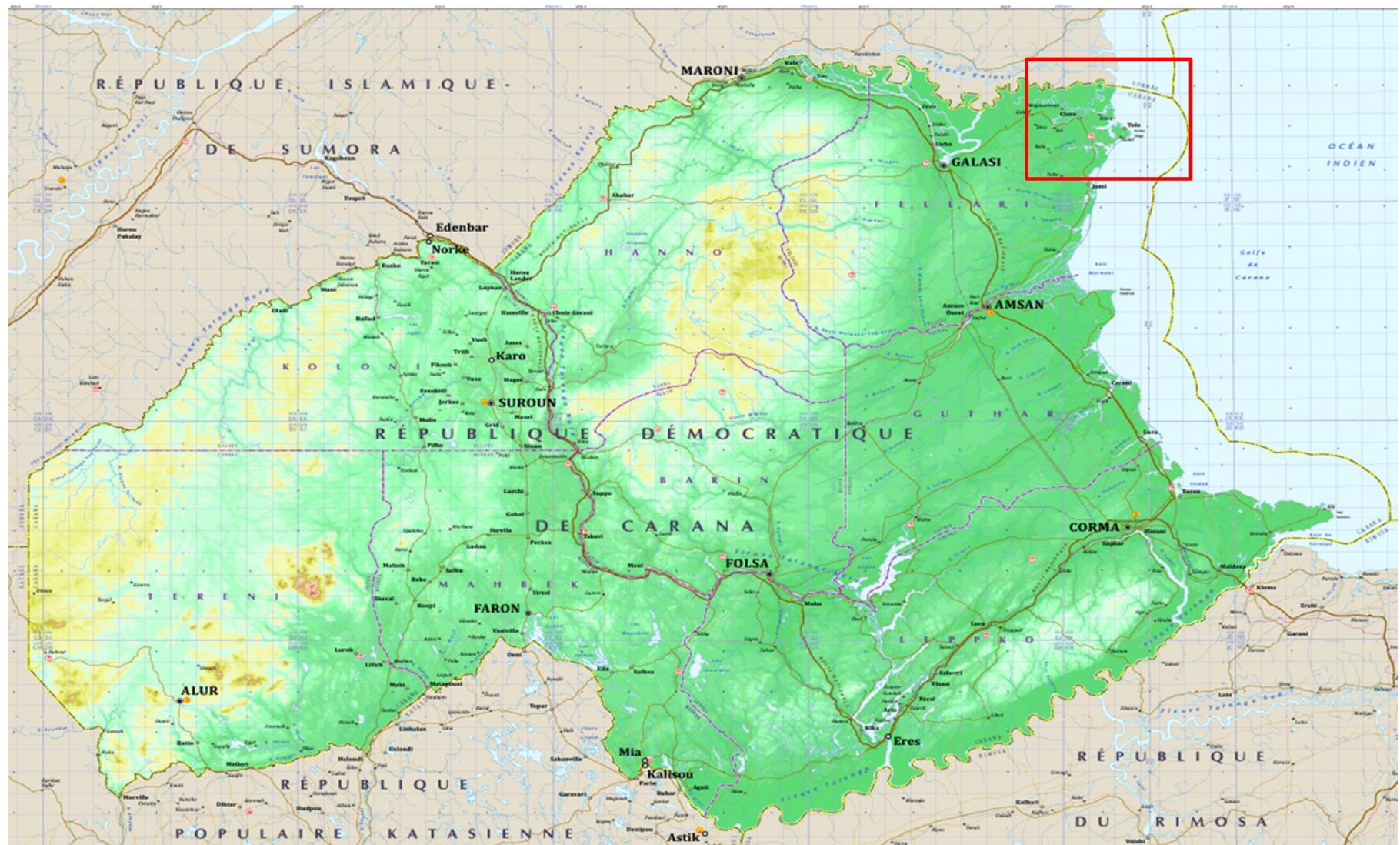
EXERCISE ONLY: FOR TRAINING PURPOSES

- | | |
|--|---|
| | <ul style="list-style-type: none">d) Opportunity – Where and when will the attack take place?e) Expected outcome of attack.f) Reasons why this location and method of attack has been chosen.g) Identification of the biggest risks involved in this plan.h) Any other relevant information you feel necessary. |
|--|---|

IF YOU HAVE ANY QUESTIONS ASK

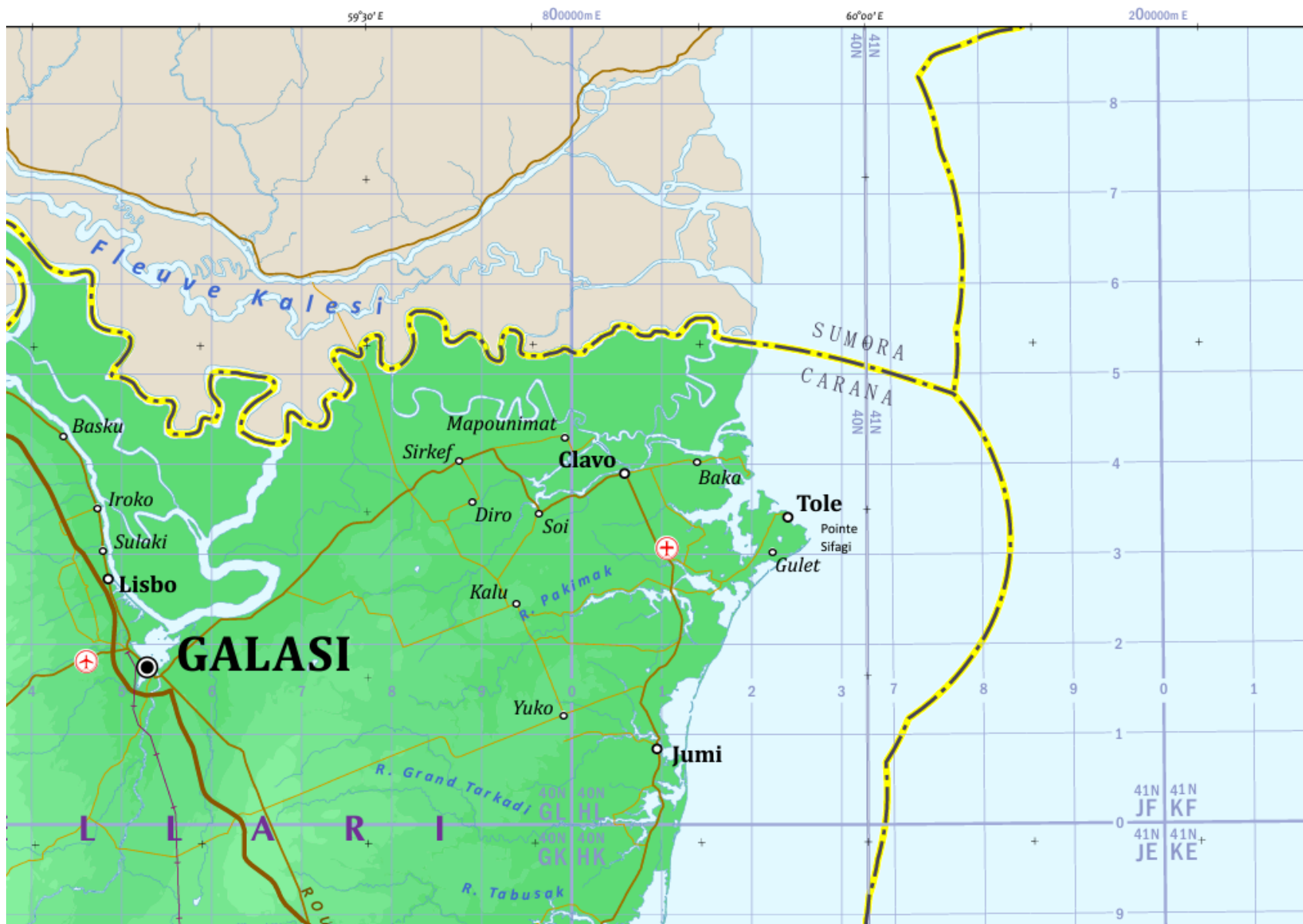
EXERCISE ONLY: FOR TRAINING PURPOSES

Map of CARANA in General



EXERCISE ONLY: FOR TRAINING PURPOSES

Port City of TOLE



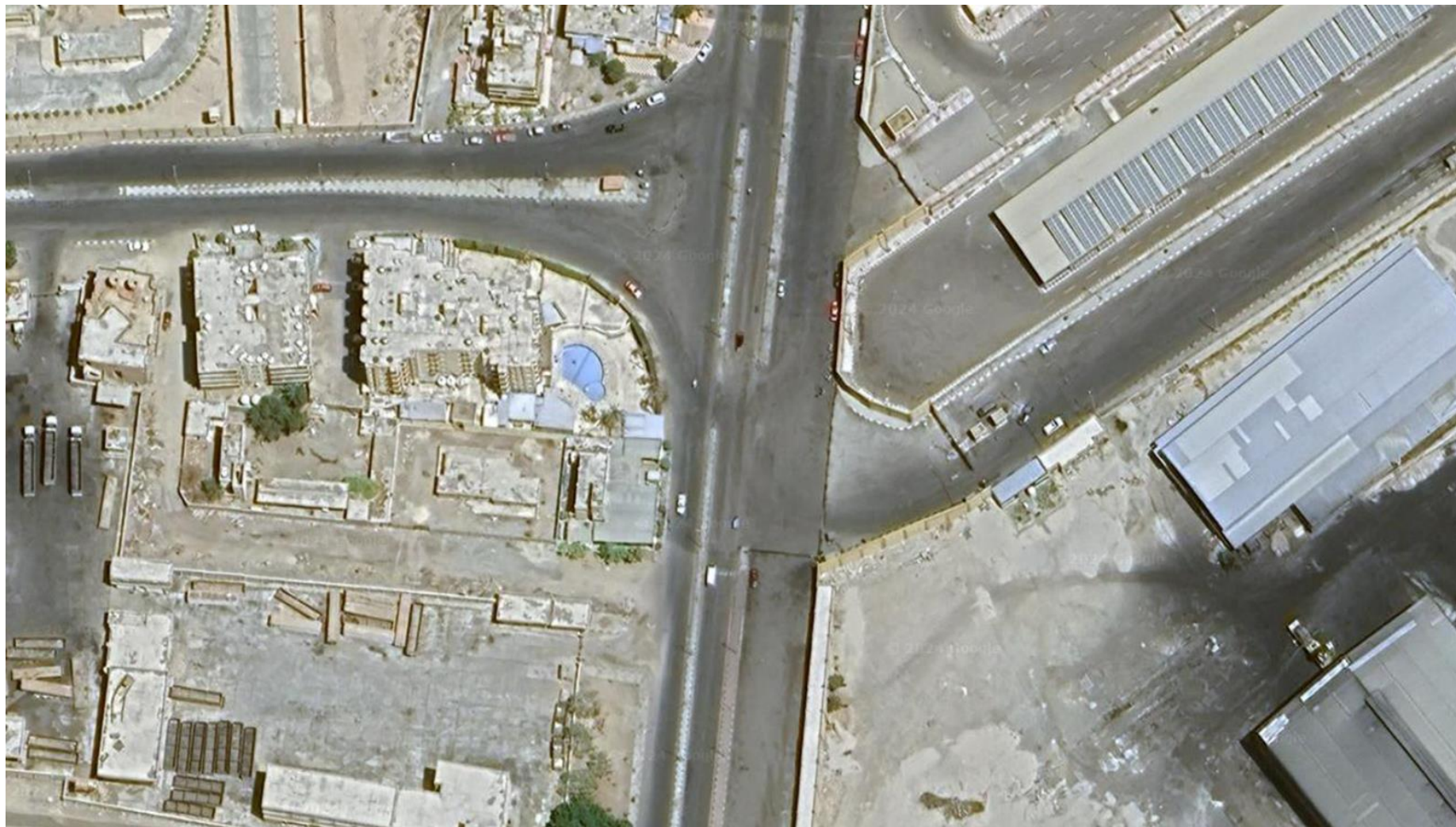
EXERCISE ONLY: FOR TRAINING PURPOSES

TOLE PORT IN GENERAL



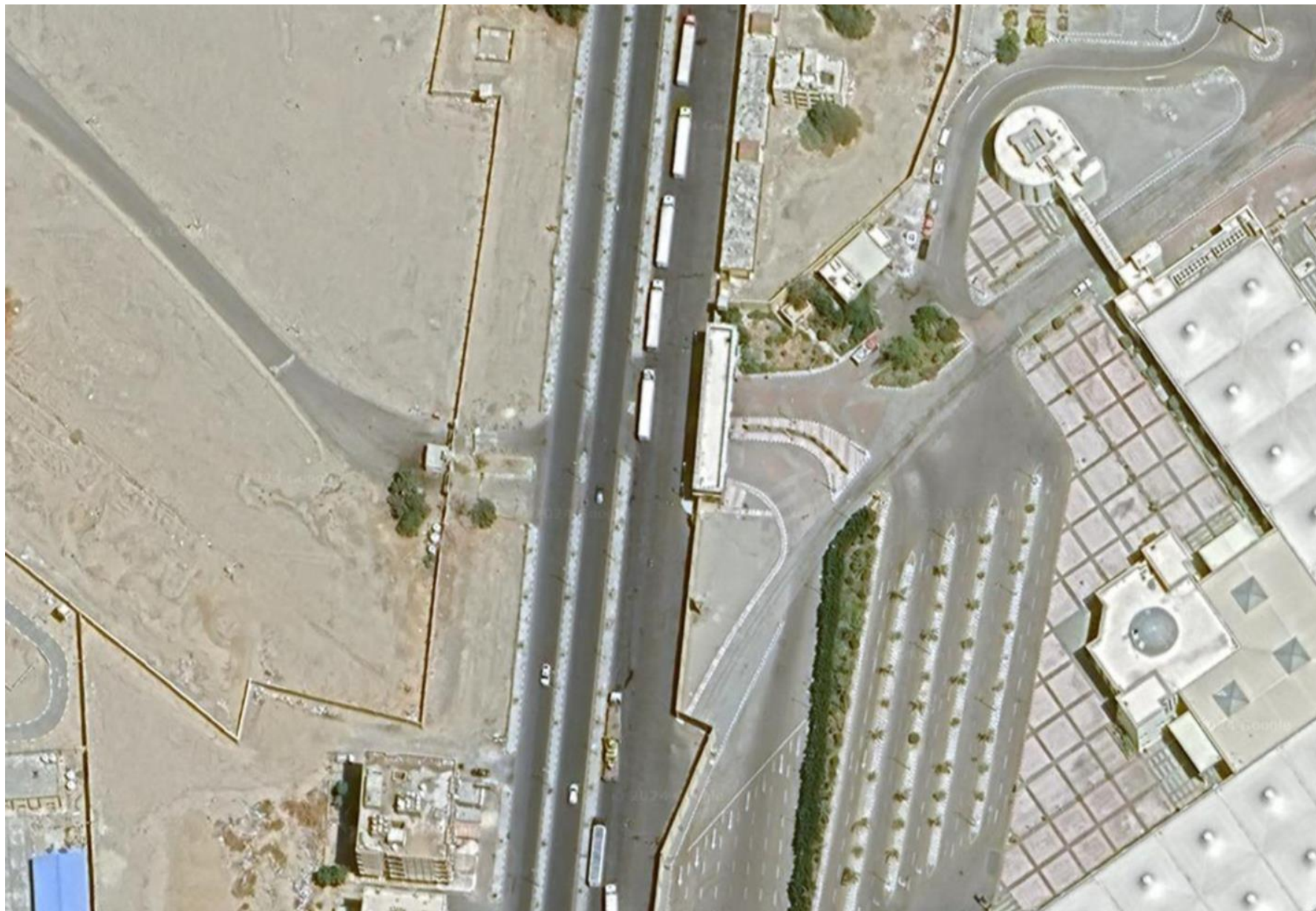
EXERCISE ONLY: FOR TRAINING PURPOSES

ENTRY POINT 1



EXERCISE ONLY: FOR TRAINING PURPOSES

ENTRY POINT 2



EXERCISE ONLY: FOR TRAINING PURPOSES

ENTRY POINT 3



EXERCISE ONLY: FOR TRAINING PURPOSES

BERTHING POINT



EXERCISE ONLY: FOR TRAINING PURPOSES

Instructor Guidance – NOT TO BE ISSUED TO STUDENTS

The CISC Cell Commander will be here shortly. You have 45 min to plan. He will expect a 10 min brief from you. You are to:

1. Produce a trace/overlay/sketch of the attack identifying all Contact Points (intended explosion site), Firing Points (triggerman location), escape routes, and relevant locations. **The students will be required to produce a sketch map or produce a digital overlay to brief their plan. If the student have laptops available, a digital copy of the associates slide for this exercise must be given to them.**
2. Then brief your plan in detail. **The brief needs to be short, covering the key sequences of events. Whilst conducting planning, the instructor must encourage the students to consider the reality of their plans.**

Your plan must include:

- a) A brief scheme of manoeuvre (the outline of the plan with key timings)
- b) Your intent – who are you specifically targeting and why? Who do you not want to harm and why?
- c) Capability – what specific type of attack/IED are you going to use? **The students need to align the type of attack with the intention of the attack. E.g. A VOIED cannot be used if they are specifically targeting UN troops but not wishing to harm civilians.**
- d) Opportunity – Where and when will the attack take place? **The location and time of their attack must align to their intention and the type of device they wish to use.**
- e) Expected outcome of attack. **The student plan should align intention with their outcome.**
- f) Reasons why this location and method of attack has been chosen.
- g) Identification of the biggest risks involved in this plan. **Risks should be considered based on the type of attack they use. Eg. A VOIED killing civilians, a CWIED having the firer being caught, a timed device functioning before/after troops arrive. They also need to consider risks of being caught during the preparation phase and in the extraction phase. This is to encourage the student to understand that these are issues that a potential enemy also have to consider.**
- h) Any other relevant information you feel necessary.

IF YOU HAVE ANY QUESTIONS ASK